

BC Consulting GmbH

Gerald Führer, Gerhard Reismüller

2022



consulting

rethink business continuity management

Ready for any Scenario with BC Consulting



We thought yesterday what could happen tomorrow to be prepared today



We support our customers not only in projects, but also in times of crisis



We deliver all required services and products for the comprehensive BCM approach from a single source



We are market leader in BCM consulting and BCM software in Austria

BC Consulting Team AT + Other Locations



Gerald Führer, MBA MSc
Director



Dipl.-Ing. Gerhard Reismüller
Director



Florian Schwarz, BA MSc
Senior BCM Consultant



Tim Reismüller, BSc
Senior BCM Consultant



Dominik Schellenbacher, BA
BCM Consultant



- › Melk
- › Vienna
- › Berlin
- › Luxembourg
- › Bucharest



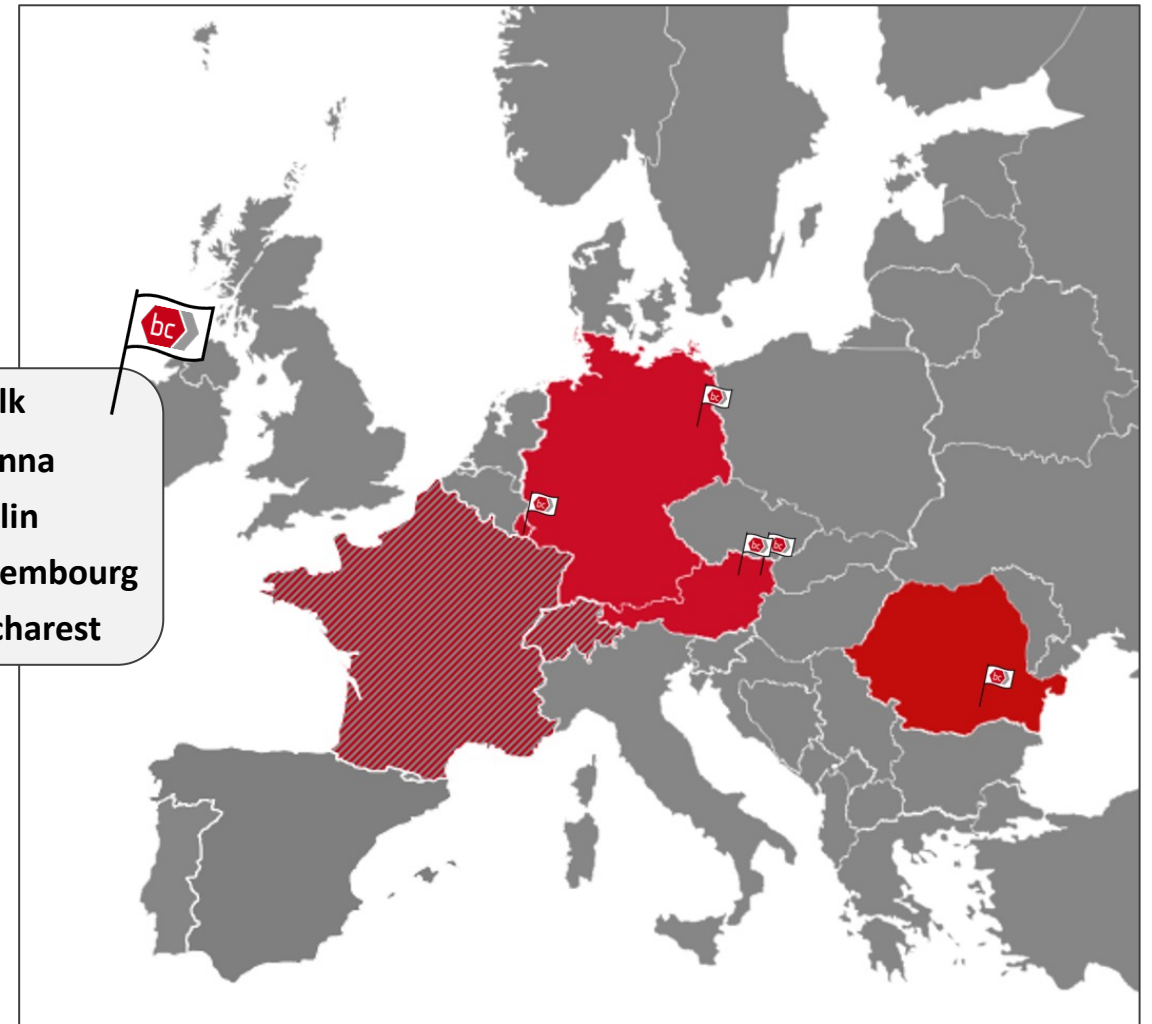
Irina Coiciu
Partner Romania



Guy Siebenaler
Partner Luxembourg



Frank Fischer
Partner Germany

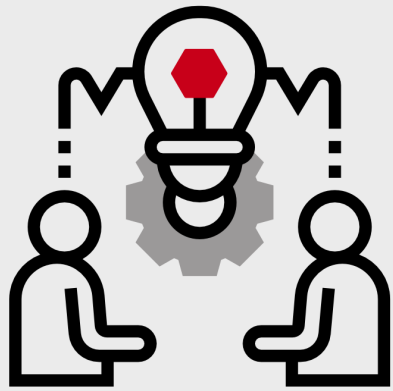


Selected References

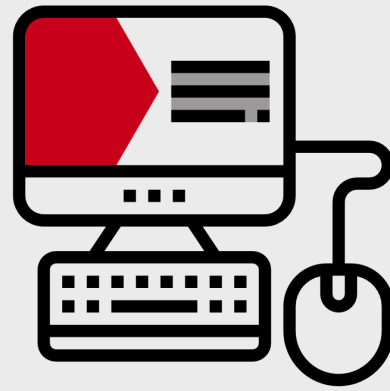


Etc.

Our Portfolio



CONSULTING



SOFTWARE



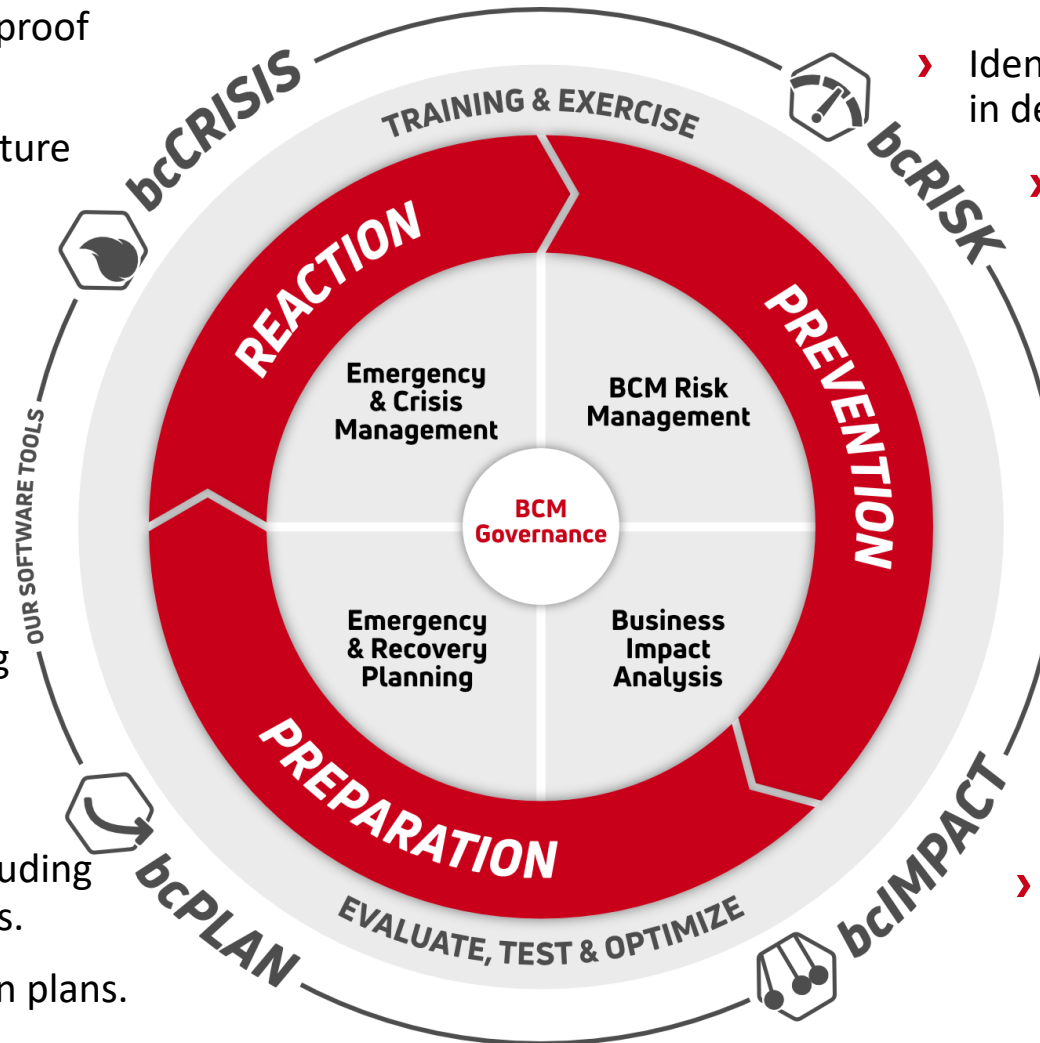
TRAINING

Business Continuity Management



- › Document crises in an audit-proof manner.
- › Specify crisis room infrastructure and technical equipment.
- › Establish crisis organisations and define crisis roles.
- › Organise staff work with forms, action planning and situation picture.

- › Develop recovery plans for failure scenarios including workaround, responsibilities and resources.
- › Develop action checklists for root cause scenarios, including responsibilities and resources.
- › Create alerting and escalation plans.



- › Identify and describe risk scenarios in detail.

- › Analyse risk scenarios based on the probability of occurrence and impact criteria.
- › Evaluate risk scenarios and define coping strategies.

- › Assess business processes against criticality categories such as availability (damage classes), confidentiality and integrity, and collect RTO and RPO.

- › Identify critical business processes and survey resources for regular and emergency operation.

Why Digitisation of BCM?



Challenge

- › **BCM has become indispensable in today's organizations:** Regulatory requirements are also being audited and enforced more and more stringently (FMA, ÖNB)
- › **The current working world has changed:** Social media, real time online, scenarios come faster and overlapping (e.g. pandemic, cyber, blackout, climate change)



Solution

An end-to-end BCM software solution is needed to meet these challenges

- › Digitalized BCM in distributed (remote) teams
- › "All-in-one" solution for all BCM aspects
- › Usability according to current requirements
- › Ongoing development and adaptation to methodological findings and standards, as well as customer requirements



Added Value

Advantages of a BCM software solution compared to Excel or similar tools

- › Legal and audit security
- › Full support for remote teams and ways of working
- › Digitalisation of processes
- › Automation to relieve personnel resources
- › Structured, uniform, standards-compliant documentation
- › Overall BCM consideration and documentation

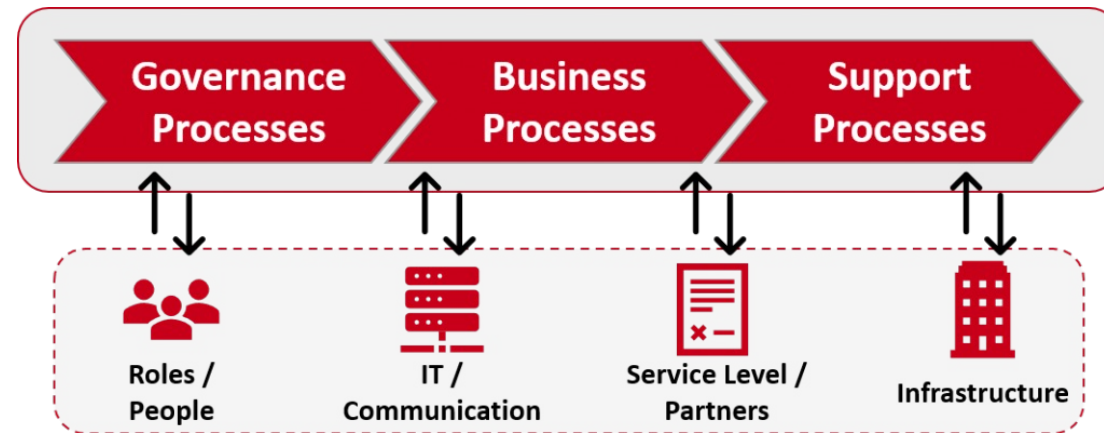
- › Modern risk management must be based on international standards → Therefore, our process model is strictly aligned with ISO 31000
- › Today's threats are many and varied → Therefore, we pursue an all-hazard approach. This is the only way to achieve a comprehensive threat picture
- › The decisive factor in the impact assessment of risks is the focus on the protection goals of the organization → Therefore, these are always at the center of our methodology



- › Modern risk management must be based on international standards → Therefore, our software is strictly aligned with ISO 31000
- › The presentation of the comprehensive threat picture in the bcRISK Heatmap is the instrument to ensure the comparability of risks
- › By comparing existing, planned and possible measures, risk management becomes a control instrument for investment planning



- › A modern business impact analysis must be based on international standards → Therefore, our process model is strictly aligned with ISO 22301
- › Only the specialist department knows the potential impact/damage in the event of process downtime. The crucial thing is the alignment of these key figures with IT and facility management
- › Processes per se cannot fail but can only be affected by failing resources → Therefore, the consideration of all critical resources including service providers is essential for our methodology



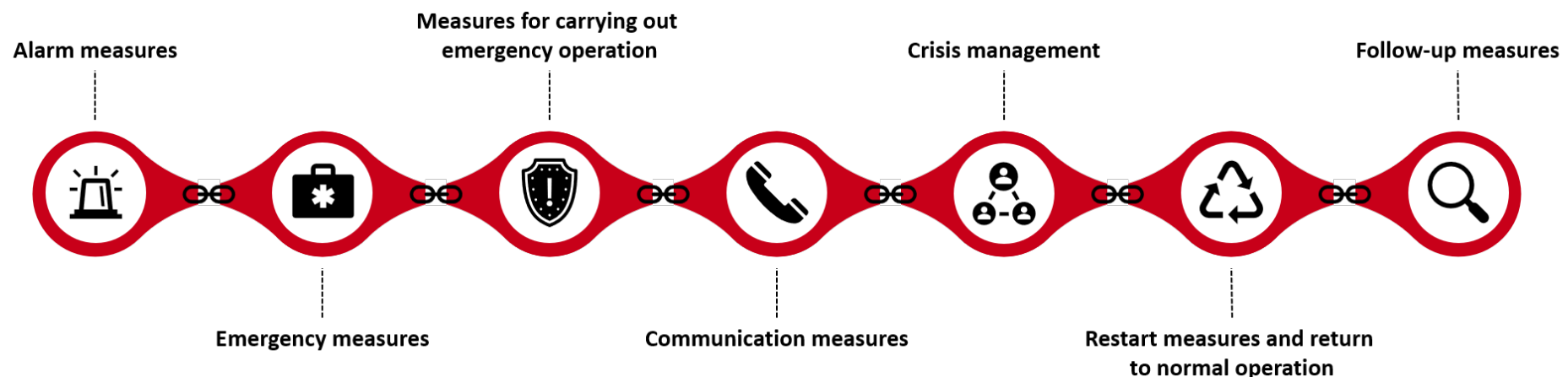
- › A modern business impact analysis must be based on international standards → Therefore, our software is strictly aligned to ISO 22301
- › The interface between BCM and ITSCM has to be mapped automatically in order to represent current and real requirements
- › The reporting of critical processes, critical resources and critical assets according to various requirements such as supervision, ownership, audit etc. can only be realized efficiently with one software



Emergency and Recovery Planning

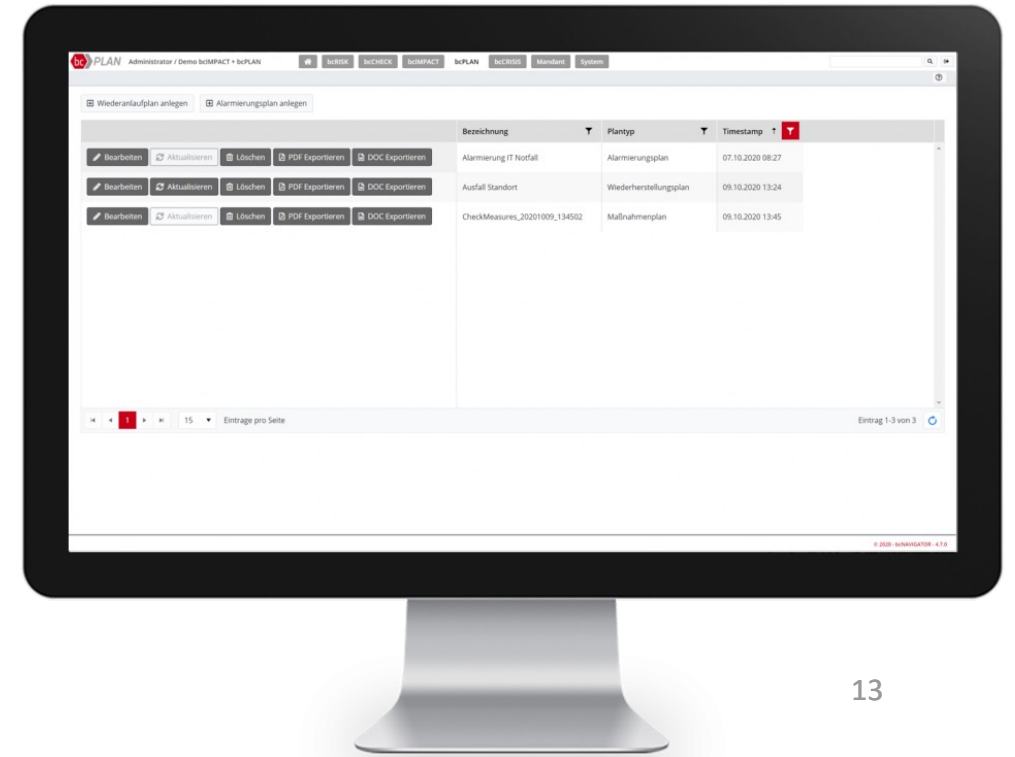


- › In case of an emergency, comprehensive Word-emergency documentation cannot provide any results → Only clearly structured checklists count
- › Only the clear regulation of responsibility and competence for measures ensures a coordinated and rapid procedure in an emergency
- › With our methodology, not only the measures, responsibilities and time processes are considered, but also the required resources are mapped





- › In an emergency, comprehensive emergency documentation cannot provide results → Only clear checklists count
- › In an emergency "knowing heads" requires integration of the accessibility of all parties involved in a critical event
- › The maintainability and updating of emergency checklists are only possible with software solutions



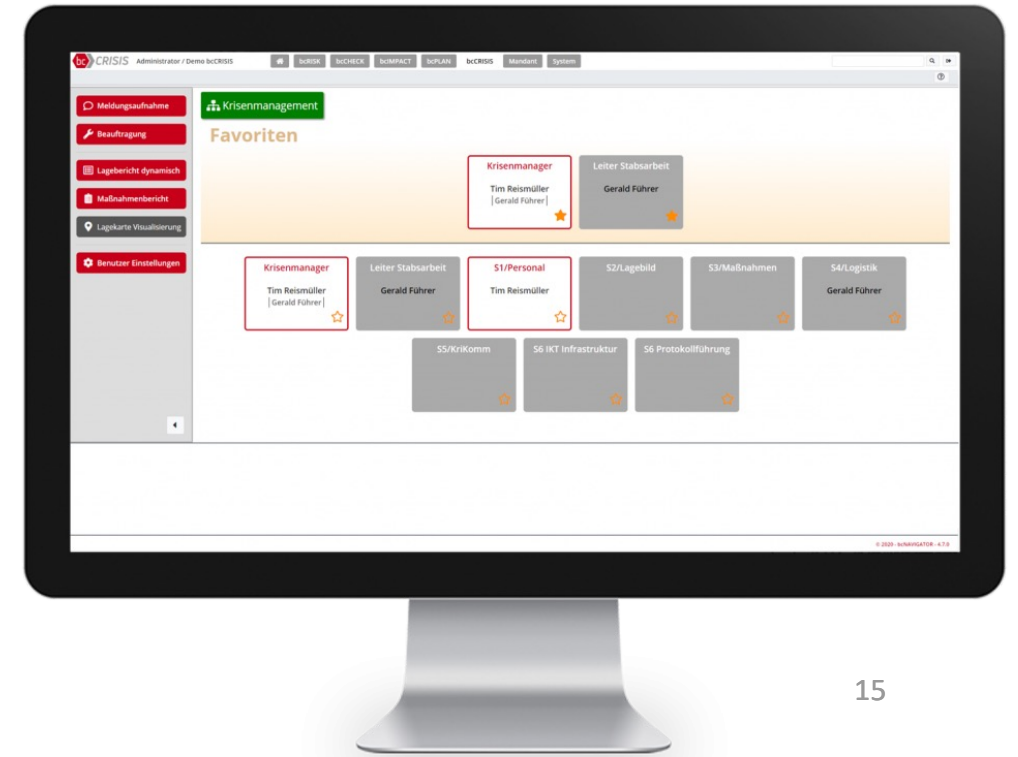
Crisis Management



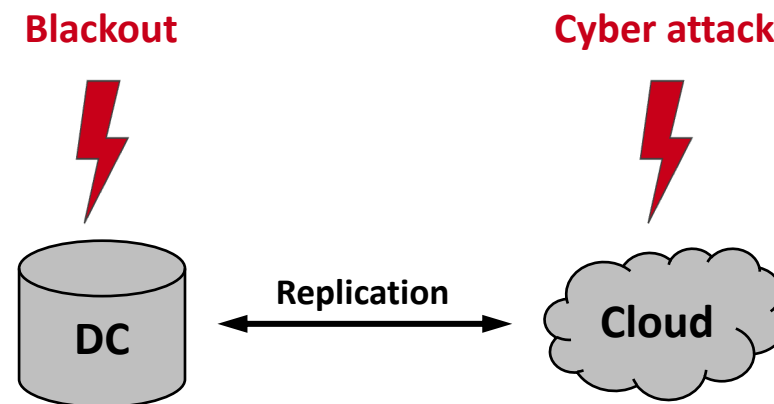
- › Modern crisis management must be based on regulatory and BOS standards → Therefore, our procedure model is strictly aligned to the SKKM model
- › A crisis management team must create order in chaos → This is only possible with standardized, proven tasks, information flows and tools
- › Ensuring audit-proof documentation in a crisis is only possible with defined and trained methods and tools



- › Modern crisis management must be based on regulatory and BOS standards → Therefore, our software is strictly aligned to the SKKM model
- › Digitization is also a central topic in crisis management → Only a digitally mapped remote crisis management team with clear rules mapped in software can meet today's challenges
- › Ensuring audit-proof documentation in a crisis is only possible with defined and trained methods and tools



- › Web application based on .NET Framework and MS SQL
- › Installation takes place on Microsoft Internet Information Service (IIS)
 - Depending on the configuration, via the Internet (hosted by BC Consulting Partner) or Intranet (on-premise installation)
- › Can be displayed and operated in any web browser
- › Various interfaces to customer systems available
 - Active Directory connection
 - GIS systems
 - Alarm systems
- › Distributed infrastructure between data center and cloud possible



Dipl.-Ing. Gerhard Reismüller

Director

+43 699 130 120 39

gerhard.reismueller@bc-consulting.at



Gerald Führer MSc MBA

Director

+43 664 750 185 07

gerald.fuehrer@bc-consulting.at



More infos at
www.bc-consulting.at

